

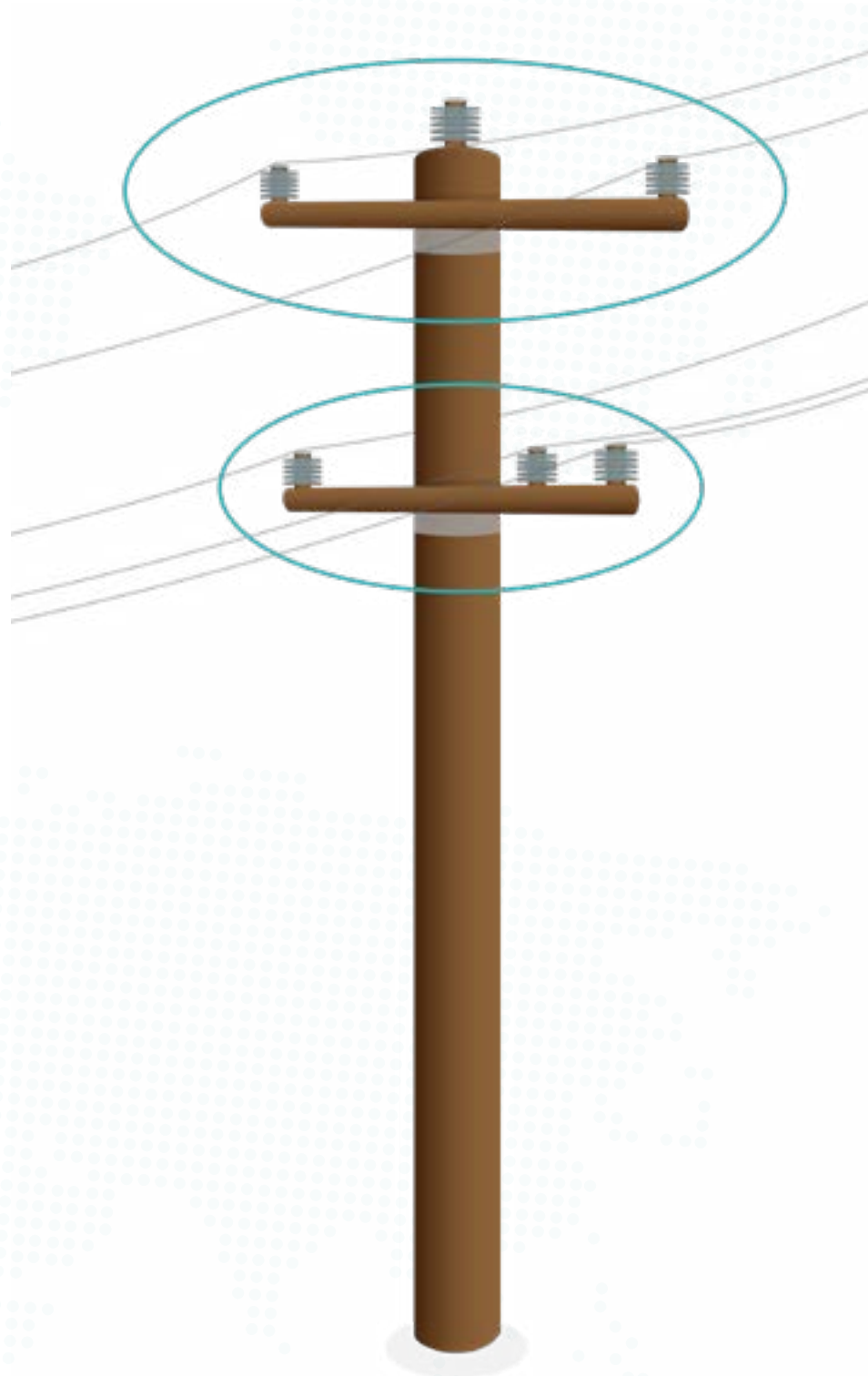
Capture guide

Distribution poles.

This flight guide is for inspections of distribution poles.

Areas of interest

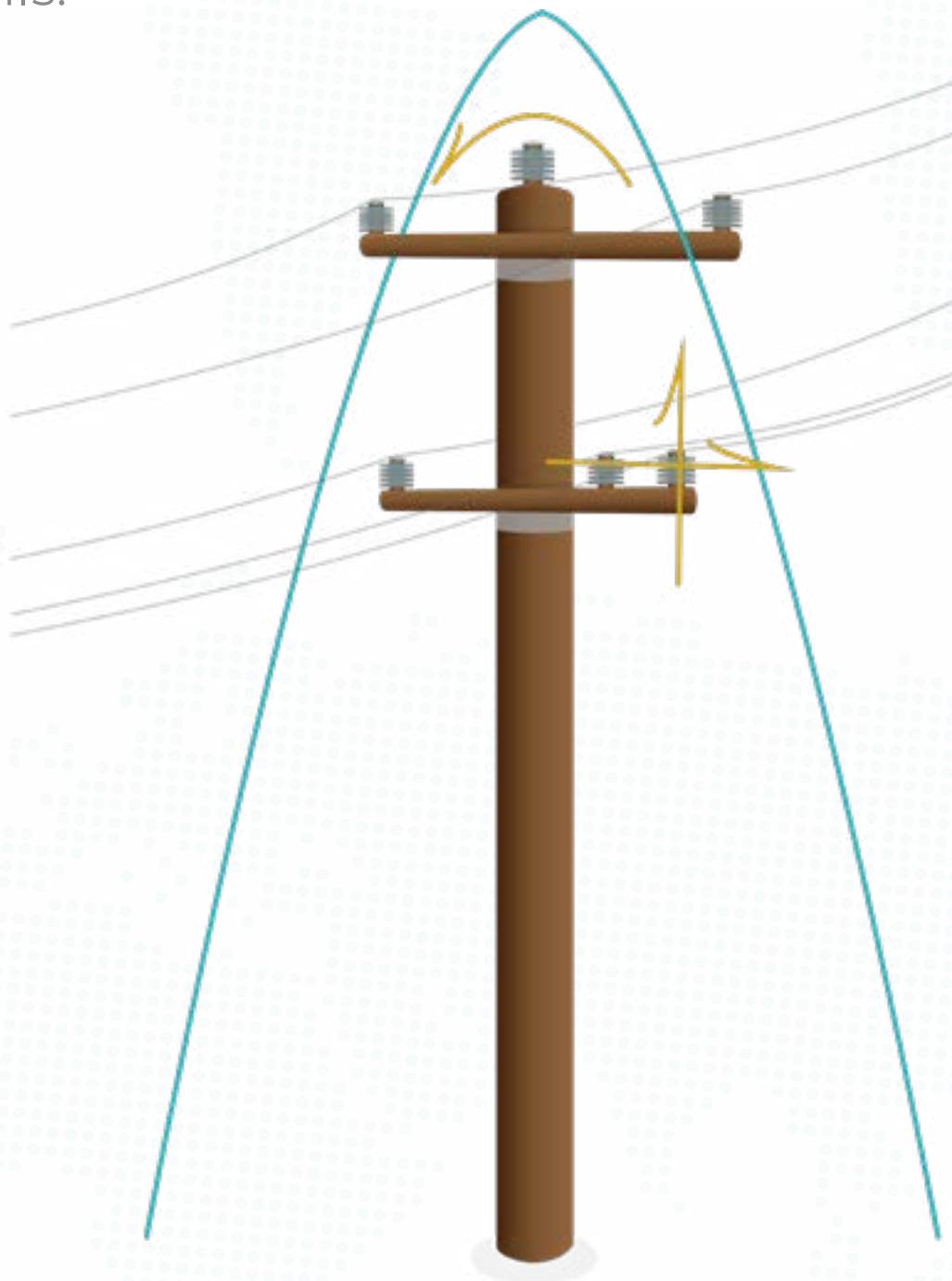
- Missing hardware
- Damaged hardware
- Loose attachment hardware
- Damaged or cracked insulators
- Flashed insulators
- Condition of conductors
- Condition of conductor attachment points
- Condition of pole



Flight path.

Consider the camera angle and adjust as needed. A good starting point is 30° above and 6-12 feet to the side.

Adjust the speed to the amount of details you wish to capture - the slower flight, the more details.



Data.

Image resolution has to be high enough for zoom.
We recommend 20MP.

Get enough images to capture all sides of elements inspected, 4-8 per structure is usually adequate.

Good examples

