

Capture guide

Distribution lines.

This guide describes a cost effective way to capture UAV images of distribution lines with a balance between cost and quality.

This capturing method ensures better results than helicopter- or ground-based inspections and enables you to train AI to categorize components and find faults.

Image quality

- Camera with 16 MP or above
- When taking pictures the drone should be at a hover

Flight & capture

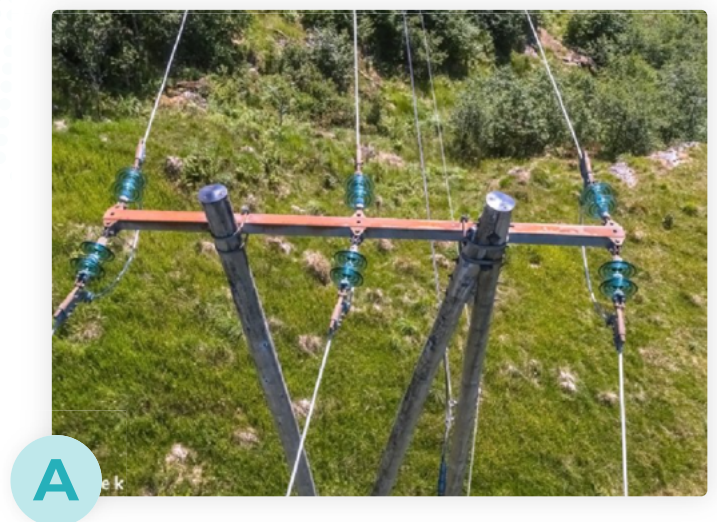
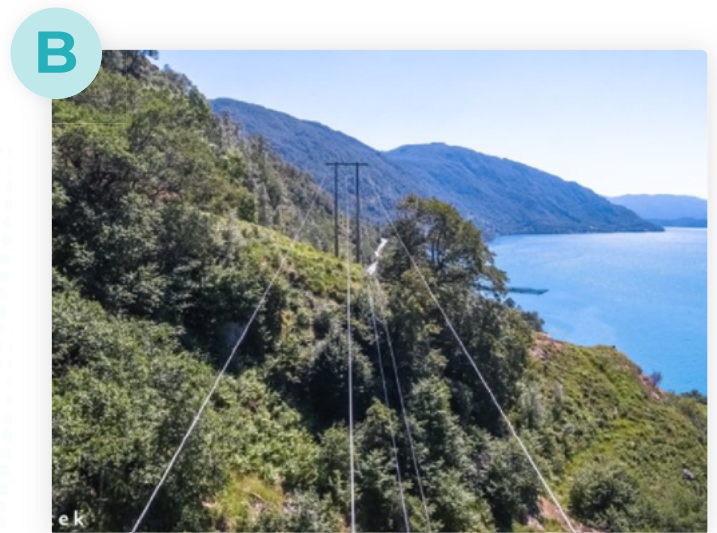
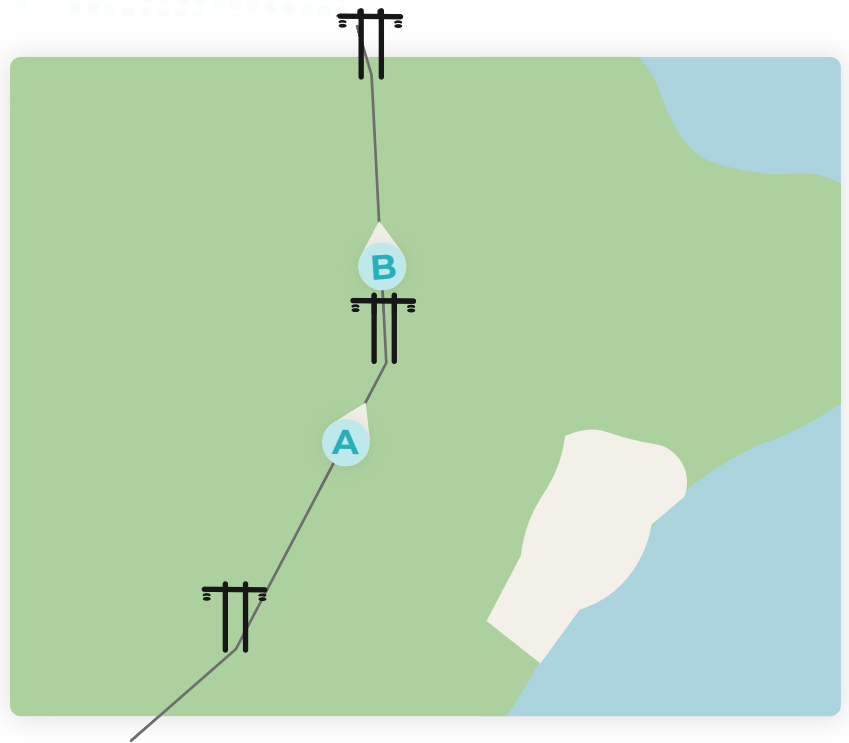
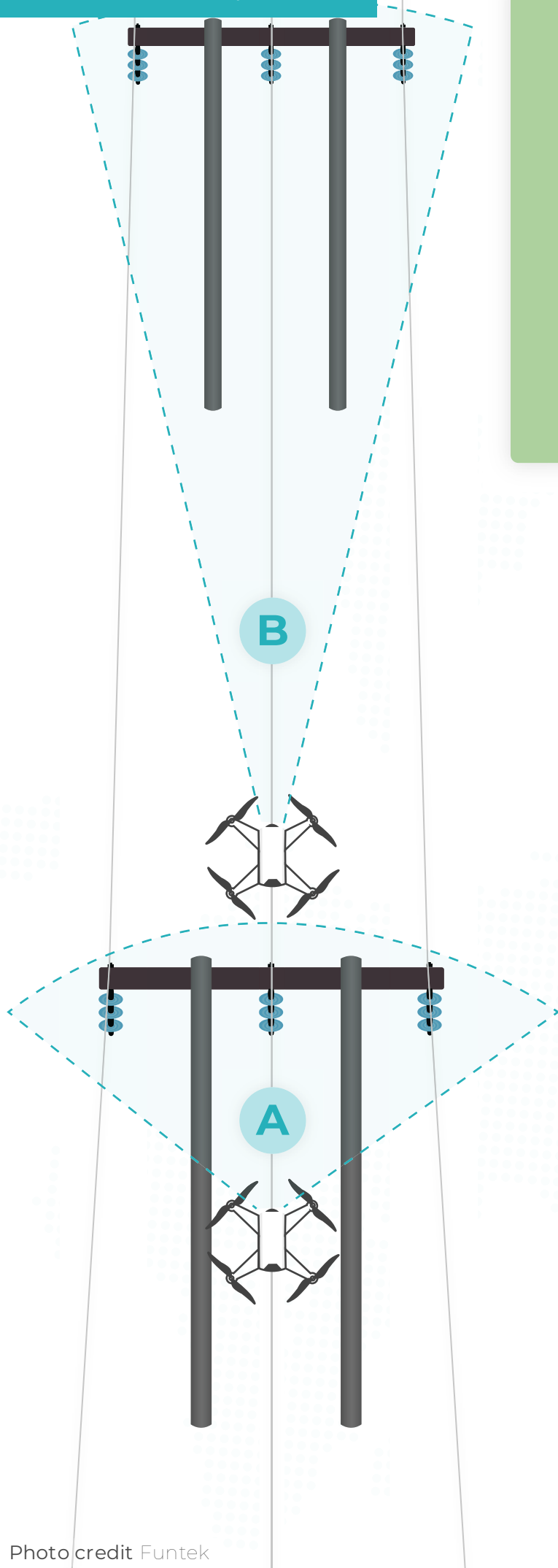
- For poles **without** top-middle insulator, fly the drone directly above the line.
- For poles **with** top-middle insulator, fly slightly to the side, to avoid the insulator covering the top cap view.
- Fly at a distance enabling you to get a clear view of the entire pole and line, while including as little of the surroundings as possible in the view. A distance of 2 - 4 meters is usually sufficient.

A Take one picture before the pole, when pole and insulators are directly in the frame.

B Take one picture directly before and after the pole, when the lines and next pole are directly in the frame.

C Complex poles may require more than one image. In this case, use both illustrations when surveying.

Overview inspection



Visual asset inspection

