

Capture guide

Photogrammetric data acquisition over power-lines.

Image quality

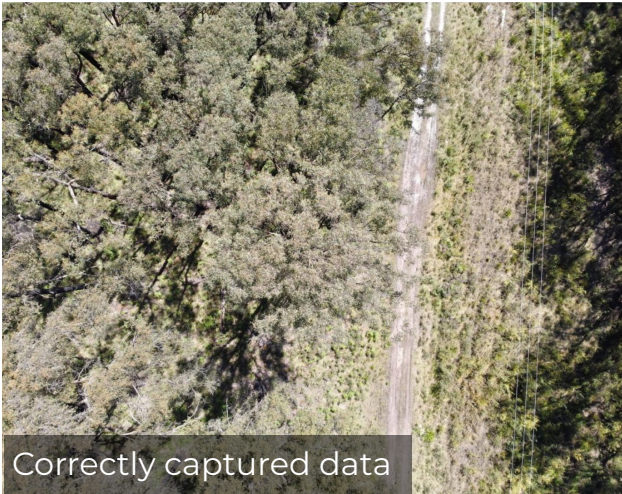
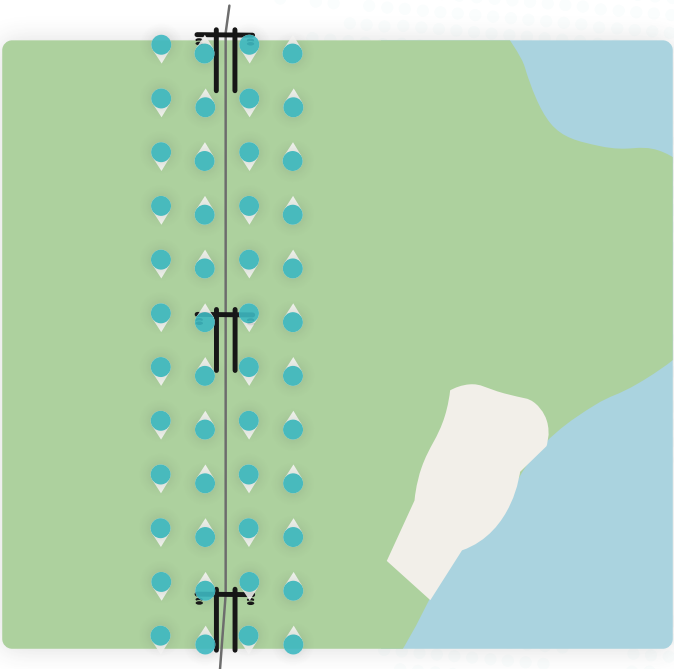
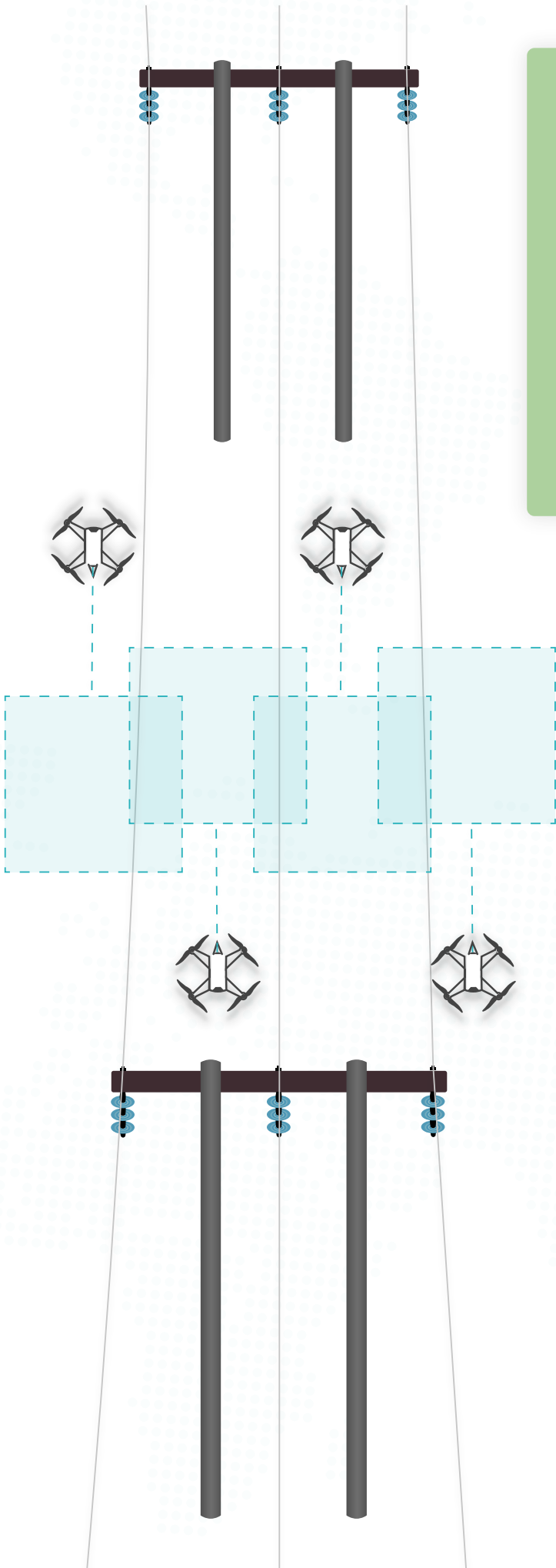
- Resolution should be 0.8 - 1.5cm/pixel.
- GSD of 2-3 cm is sufficient.
- Lines must be clearly visible in all images (see example below).



Flight & capture

- The drone must follow the line it is capturing.
- For the most accurate results, four flight-lines, two on either side of the pole, are needed.
- For standard results, two flight-lines, one on either side of the pole, are needed.
- Flight-lines should overlap at least 70/30.
The more overlap the better results can be expected.
- Flight height adjusted to the terrain profile so as to maintain a constant height as possible above the poles.

Most accurate results



Correctly captured data

Standard results

