

Capture guide

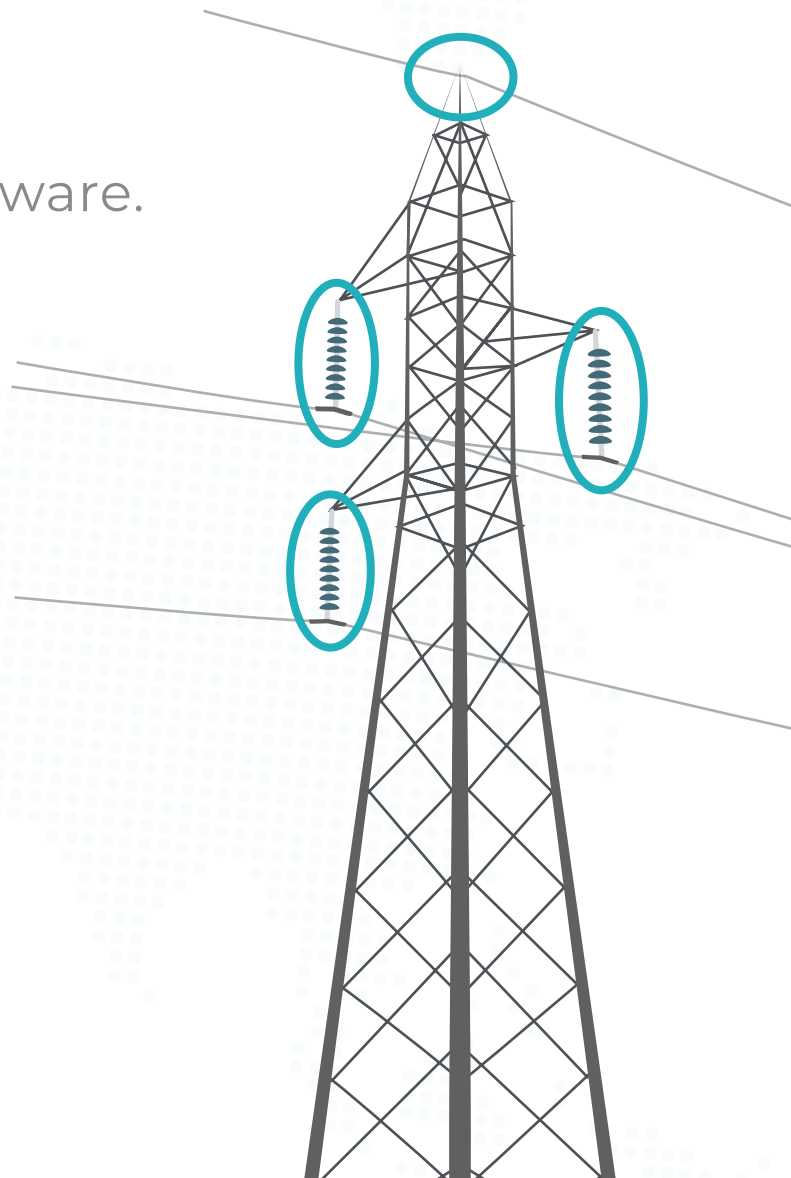
Electrical equipment

Transmission lines.

This flight guide is for inspections of electrical equipment on transmission towers.

Areas of interest

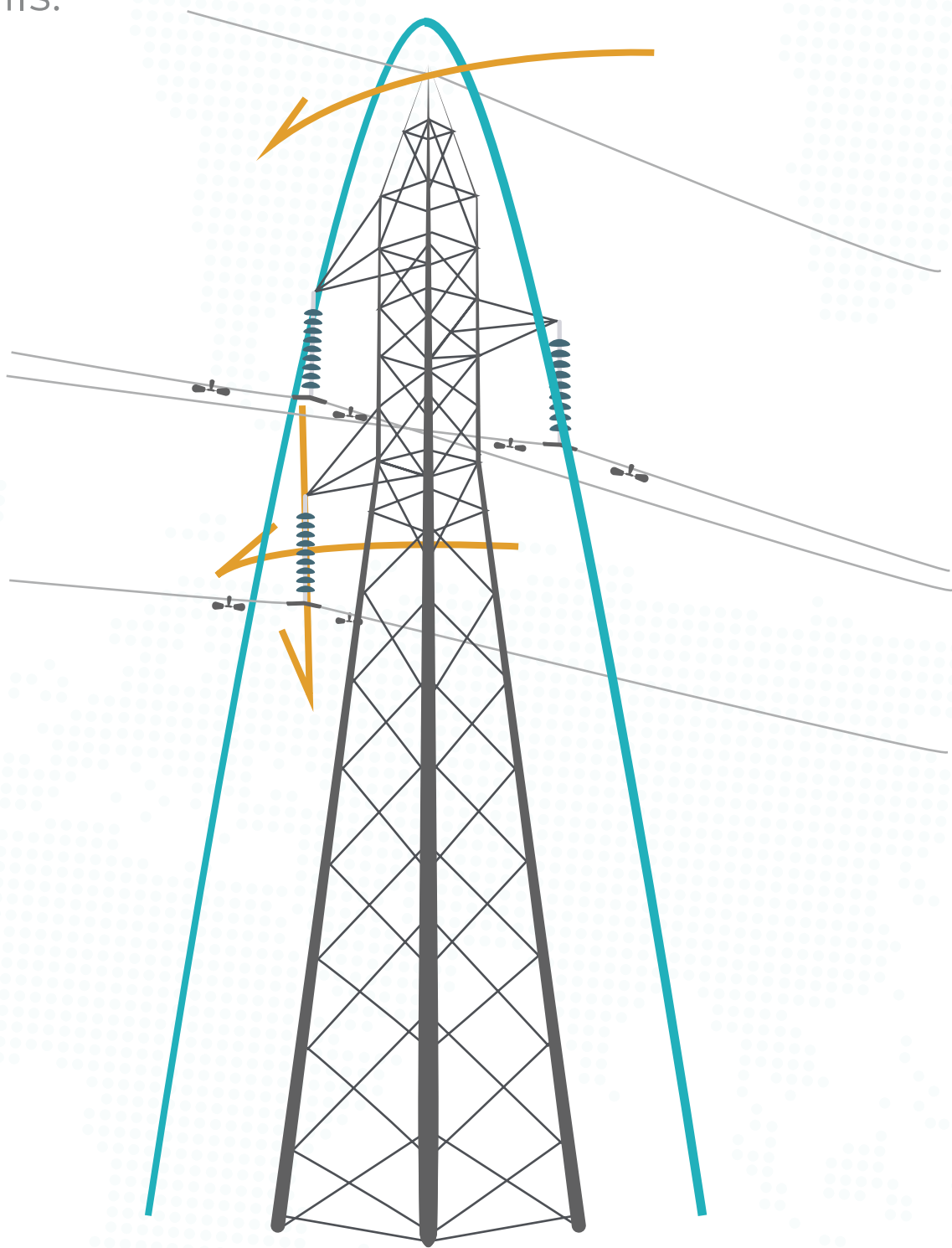
- Missing, damaged or loose attachment hardware.
- Damaged, cracked or flashed insulators.
- Condition of conductor attachment points.



Flight path.

Consider the camera angle and adjust as needed. A good starting point is 30° above and 30 - 50 feet to the side.

Adjust the speed to the amount of details you wish to capture - the slower flight, the more details.



Data.

Image resolution has to be high enough for zoom.
We recommend 20MP.

Get enough images to capture all sides of elements inspected, 8-12 per structure is usually adequate.

Good examples

